

20' x 48'
concrete pad

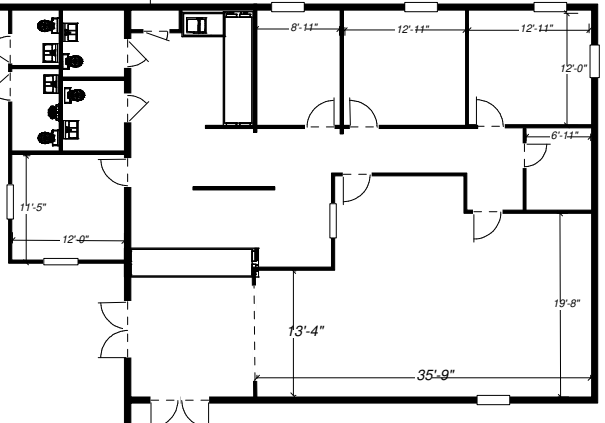
100'-0"

50'-0"

3235 Middlebrook Pike
22,100 Sqft

10' x 10'
Drive in

42'-0"



10' x 10'
Drive in

8'w x 10'h
Dock

8' x 8'
Dock

8' x 8'
Dock

10'w x 8'h
Dock

10'w x 8'h
Dock

10'w x 8'h
Dock

10'w x 8'h
Dock

10'w x 8'h
Dock

200'-0"

Not to Scale